

# BERMUDA BRIDGE CLUB COVID PROTOCOLS

Updated 2 August 2021

**These protocols are established for operating under Bermuda Phase 3 and are set in the context of the Government Relaxed Restrictions for Immunized Persons (attached) recognising the Club is a low risk setting.**

**Please help ensure we stay safe and compliant by cooperating with the Directors as they do their best to ensure our operation is beyond reproach.**

**All members coming to the Club must be fully vaccinated** and at least **2 weeks** must have elapsed between their second jab and playing at the Club. Proof of vaccination (certificate or vaccination card) will only be required on the first occasion of playing.

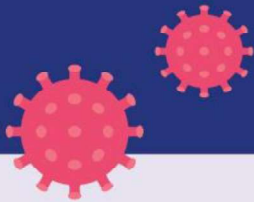
**Members are to sanitise their hands immediately upon entry** to the Club. Members need not normally wear masks at the Club – but should have a mask with them in case it is required.

A fully vaccinated member who has travelled overseas or who has been in close contact with a fully vaccinated person who has travelled overseas must wait until after the negative result of the **DAY FOUR** test before playing. **A member who has been in close contact with an unvaccinated traveller must not come to the Club until the unvaccinated traveller has been released from quarantine.** No visitors to the Island will be permitted to play at this time. Names of players will be recorded in the appointment book so we have a full record of attendance.

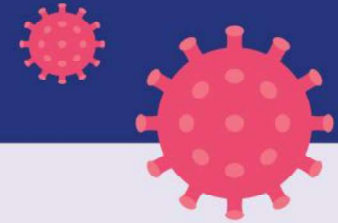
To further minimise risks to Members:

- alternate tables will be used to allow extra social distancing. The baize remains covered with plastic to allow for sanitising after games.
- The Director will come to the table to receive the entry fee. (This avoid queueing to pay) .
- Members are encouraged to sanitise their hands regularly – ideally at the end of each round. A bottle of sanitizer will be kept at each table for this purpose.
- We will continue to use portable bidding boxes, since they are easier to sanitise, but the boxes should remain on the table at the end of the round – they do not need to be transported around the room.
- The restrictions remain in place for use of the kitchen/bar area and bathrooms, as shown on the posted notices. At the end of the game, used glasses should be placed on the bar or kitchen door shelf.

**At the end of the game, bidding boxes and Bridgmates should be returned to the storage table for sanitising before the next game.**



# COVID-19 (Coronavirus)



## Phase 3 – Relaxed Restrictions for Immunised Persons

Version 1  
Updated 5 June 2021

### EXPANSION OF SERVICES

#### Workplace Quarantine

Subject to the approval of a contact tracer/health officer under the authority of the CMO, if you are a close contact of someone who has COVID-19 you do not need to quarantine if:

- you've received a negative nasopharyngeal swab test
- you've been asymptomatic for the last 14 days

You may return to work under certain conditions. For example, you must:

- wear appropriate PPE
- get a nasopharyngeal swab test at the end of the 14-day COVID-19 incubation period
- ONLY travel between work and home
- follow additional guidelines at <https://www.gov.bm/workplace-quarantine-immunised-workers>



#### Mask wearing Outdoors

Masks are not required except in certain crowded and high risk settings or venues.

**CURFEW IN PLACE FROM 12AM – 5AM**

#### Mask wearing Indoors

- Masks are not required when gathering with other immunised persons, except in certain crowded and high risk settings or venues (e.g. gyms).
- However, persons with medical vulnerabilities should continue to wear masks if physical distancing cannot be maintained.



*\*Persons are immunised when two weeks have passed following their second dose of the COVID-19 vaccine.*

*\*Immunised persons must remain cautious, as COVID-19 is still a serious public health threat. Therefore, maximizing protection against COVID-19 is always advisable.*

*\*All other public health restrictions and guidelines remain the same and must be followed by immunised and non-immunised persons.*

*All activities are governed by Ministry of Health guidance which can be found on [coronavirus.gov.bm](https://www.gov.bm/coronavirus). Strict physical distancing must be maintained.*



GOVERNMENT OF BERMUDA

Stay informed on the latest developments about COVID-19 by visiting the Government of Bermuda's website [coronavirus.gov.bm](https://www.gov.bm/coronavirus)