

BERMUDA BRIDGE CLUB COVID PROTOCOLS

24 June 2021

These protocols are established for operating under Bermuda Phase 3 and are set in the context of the Government Relaxed Restrictions for Immunized Persons (attached) recognising the Club is a low risk setting.

Please help ensure we stay safe and compliant by cooperating with the Directors as they do their best to ensure our operation is beyond reproach.

All members coming to the Club must be fully vaccinated and at least **2 weeks** must have elapsed between their second jab and playing at the Club. Proof of vaccination (certificate or vaccination card) will only be required on the first occasion of playing.

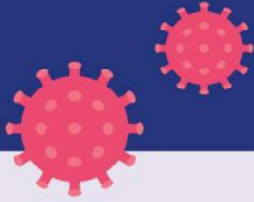
Members are to sanitise their hands immediately upon entry to the Club. Members need not normally wear masks at the Club – but should have a mask with them in case it is required.

A fully vaccinated member who has travelled overseas or who has been in close contact with a fully vaccinated person who has travelled overseas must wait until after the negative result of the Arrival test before playing. **A member who has been in close contact with an unvaccinated traveller must not come to the Club until the unvaccinated traveller has been released from quarantine.** No visitors to the Island will be permitted to play at this time. Names of players will be recorded in the appointment book so we have a full record of attendance.

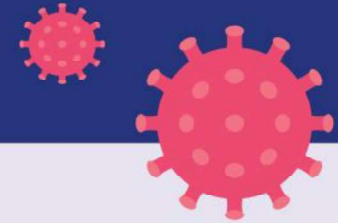
To further minimise risks to Members:

- alternate tables will be used to allow extra social distancing. The baize remains covered with plastic to allow for sanitising after games.
- The Director will come to the table to receive the entry fee. (This avoid queueing to pay) .
- Members are encouraged to sanitise their hands regularly – ideally at the end of each round. A bottle of sanitizer will be kept at each table for this purpose.
- We will continue to use portable bidding boxes, since they are easier to sanitise, but the boxes should remain on the table at the end of the round – they do not need to be transported around the room.
- The restrictions remain in place for use of the kitchen/bar area and bathrooms, as shown on the posted notices. At the end of the game, used glasses should be placed on the bar or kitchen door shelf.

At the end of the game, bidding boxes and Bridgemates should be returned to the storage table for sanitising before the next game.



COVID-19 (Coronavirus)



Phase 3 – Relaxed Restrictions for Immunised Persons

Version 1
Updated 5 June 2021

EXPANSION OF SERVICES

Workplace Quarantine

Subject to the approval of a contact tracer/health officer under the authority of the CMO, if you are a close contact of someone who has COVID-19 you do not need to quarantine if:

- you've received a negative nasopharyngeal swab test
- you've been asymptomatic for the last 14 days

You may return to work under certain conditions. For example, you must:

- wear appropriate PPE
- get a nasopharyngeal swab test at the end of the 14-day COVID-19 incubation period
- ONLY travel between work and home
- follow additional guidelines at <https://www.gov.bm/workplace-quarantine-immunised-workers>



Mask wearing Outdoors

Masks are not required except in certain crowded and high risk settings or venues.

CURFEW IN PLACE FROM 12AM – 5AM

Mask wearing Indoors

- Masks are not required when gathering with other immunised persons, except in certain crowded and high risk settings or venues (e.g. gyms).
- However, persons with medical vulnerabilities should continue to wear masks if physical distancing cannot be maintained.



**Persons are immunised when two weeks have passed following their second dose of the COVID-19 vaccine.*

**Immunised persons must remain cautious, as COVID-19 is still a serious public health threat. Therefore, maximizing protection against COVID-19 is always advisable.*

**All other public health restrictions and guidelines remain the same and must be followed by immunised and non-immunised persons.*

All activities are governed by Ministry of Health guidance which can be found on [coronavirus.gov.bm](https://www.gov.bm/coronavirus). Strict physical distancing must be maintained.



GOVERNMENT OF BERMUDA

Stay informed on the latest developments about COVID-19 by visiting the Government of Bermuda's website [coronavirus.gov.bm](https://www.gov.bm/coronavirus)